

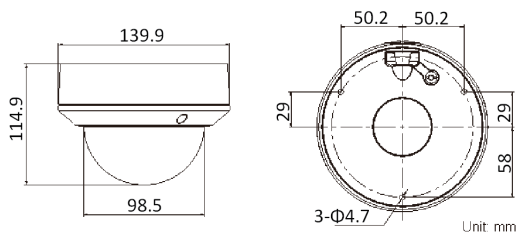
3.0MP VF IR Dome Network Camera



Key features

- 3 megapixel (2048 x 1536) high resolution
- Full HD1080p real-time video
- IR LEDs: up to 66ft(about 20m)
- DWDR & 3D DNR & BLC
- Onboard storage (up to 32GB)
- Audio I/O, Alarm I/O
- IP66
- Vandal-proof

Dimensions



Accessories



Pendant Mount
Aluminium Bracket

Wall Mount
Aluminium Bracket
with gang box

| Camera | |
|---------------------------|--|
| Image sensor | 1/3" sensor |
| Min. illumination | 0.07 lux@F1.2, AGC on 0 lux with IR |
| Shutter time | 1/25s ~ 1/100,000s |
| Lens | 2.8 ~ 12mm @ F1.4, Angle of view: 80° ~ 28.7° |
| Lens mount | Φ14 |
| Auto iris | DC drive |
| Day & night | ICR |
| Digital noise reduction | 3D DNR |
| Wide dynamic range | Digital WDR |
| Backlight compensation | Yes,zone configurable |
| Angle adjustment | Pan: 0° ~ 360°, tilt: 0° ~ 75°, rotation: 0° ~ 360° |
| Compression standard | |
| Video compression | H.264 / MJPEG |
| H.264 compression profile | Main profile |
| Bit rate | 32 Kbps ~ 16 Mbps |
| Audio compression | G.711 / G.726 |
| Audio bit rate | 64Kbps (G.711) / 16Kbps (G.726) |
| Image | |
| Max. image resolution | 2048 × 1536 |
| Frame rate | 60Hz: 15fps (2048 x 1536), 30fps (1920 × 1080), 30fps (1280 x 720) 50Hz: 12.5fps (2048 x 1536), 25fps (1920 × 1080), 25fps (1280 x 720) |
| Image settings | Saturation, brightness, contrast adjustable through client software or web browser |
| Network | |
| Network storage | NAS (iSCSI optional) |
| Alarm trigger | Motion detection.tampering alarm |
| Protocols | TCP/IP, HTTP, DHCP, DNS, DDNS, RTP, RTSP, PPPoE, SMTP, NTP, SNMP, HTTPS, FTP, 802.1x, Qos, UPnP (SIP, SRTP, IPv6 optional) |
| System compatibility | ONVIF, PSIA, CGI |
| General functionalities | Dual stream, huser authentication, watermark |
| Interface | |
| Communication interface | 1 RJ45 10M / 100M ethernet port |
| On-board storage | Built-in Micro SD card slot, up to 32 GB |
| General | |
| Operating conditions | -30° C ~ 60° C (-22° F ~ 140° F), humidity 95% or less (non-condensing) |
| Power supply | DC12V ± 10%, PoE (802.3af) |
| Power consumption | Max. 5.5W |
| Impact protection | IEC60068-2-75Eh, 50J; EN50102, up to IK10 |
| Ingress protection level | IP66 |
| IR range | Up to 66ft(About 20m) |
| Dimensions | Φ 139.9 x 114.9mm (Φ 5.5" × 4.5") |
| Weight | 1000g(2.20lbs) |

* Product picture and technical specs subject to change without previous notice.
For further information, please contact our local sales representatives.